



VORTICE

vortice.com



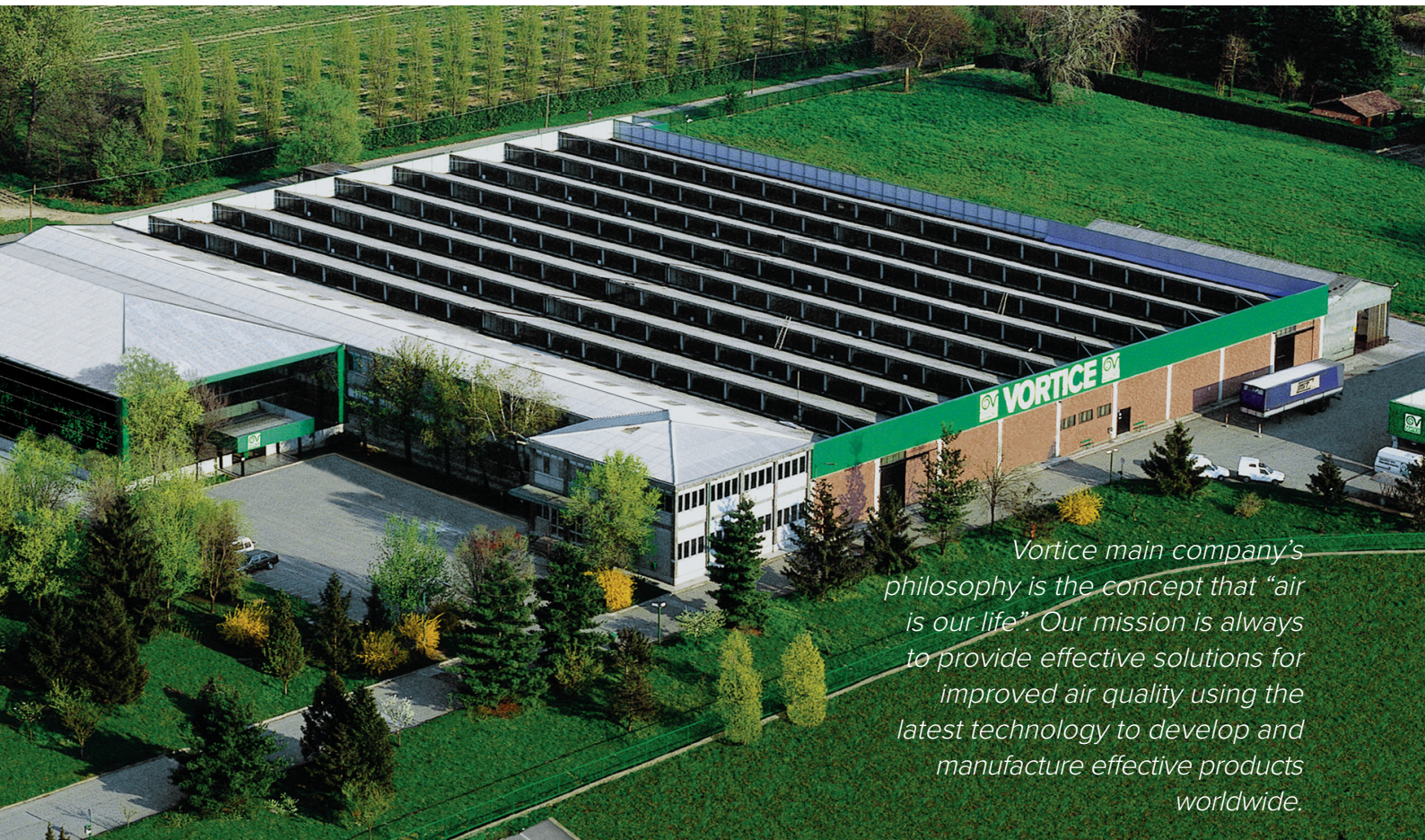
AIR CONDITIONING



VORT KRYO POLAR EVO RANGE

Local air conditioners

NEW



Vortice main company's philosophy is the concept that "air is our life". Our mission is always to provide effective solutions for improved air quality using the latest technology to develop and manufacture effective products worldwide.

Our current Vortice Headquarters have been located in Tribiano (Milan) since 1972.

Vortice has achieved European market leadership by dedicating their efforts to the production of products for ventilation, climate control, heating, extraction, purification and the treatment of air, for domestic, commercial and industrial applications. Since 1954 Vortice has been synonymous with quality and excellence and continues to make significant improvements by investing in continuous research to improve the efficiency and quality of its products.

VORTICE IN THE WORLD

ENGLAND



Founded in 1977, Vortice Limited is located at Burton on Trent in the East Midlands.

CHINA



Founded in 2012, Vortice Ventilation System is located about 200 Km from Shanghai.

SOUTH AMERICA



Founded in 2012, Vortice Latam in San José Costa Rica.

INDEX

NEW
VORT KRYO
POLAR EVO 11



NEW
VORT KRYO
POLAR EVO
13 HP

CERTIFICATIONS

The VORT KRYO POLAR EVO range are CE marked in compliance with the Directives and regulations listed below:

- 2014/35/EC Low Voltage Directive (LVD)
- 2014/30/EC Electromagnetic Compatibility Directive (EMC)
- 2009/125/EC ErP Directive, Eco-compatible
- 2011/65/EU RoHS Restriction of Hazardous Substances in Electrical and Electronic Equipment
- 2012/19/EU WEEE Electrical and Electronic Equipment Waste Directive

European Regulation N° 206/2012.
European Regulation N° 626/2012.



ErP compliant
The ErP compliant logo indicates that the appliance is eco-compatible and adheres to the ErP directive 2009/125/CE.



VORT KRYO POLAR EVO RANGE

NEW

Portable air conditioners

A

“All in one” type air conditioners, available in a cooling only version and a version with a heat pump, which encloses all the devices necessary for operation in a single unit to be housed in the room to be air-conditioned. This feature, combined with the fact that it has no special installation requirements, make it easy to use in different rooms of the house, wherever a need for air conditioning might be felt time to time.

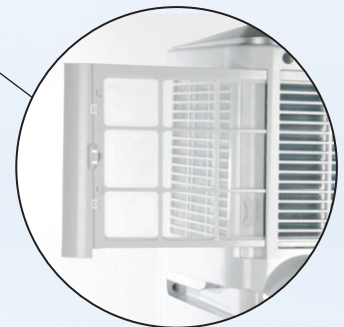
- High efficiency (class A).
- Ecological gas with low environmental impact, R290, characterised by a GWP - Global Warning Potential - that is next to zero, which complies with European Directives on the reduction of the greenhouse effect according to regulation (EU) N°517/2014, annex III, in force since 1 January 2025.
- High performance (up to 12,500 Btu/h).
- "Efficiency Boosting" function, used to significantly increase (15%) the operating efficiency of the products in cooling mode.
- Heat pump (model 13 HP): for optimal usability in the both the cold months and in the summer.



The control panel houses the buttons for product management, indicator lights, display and the infrared sensor for communication with the remote control.



Manual adjustment of the fins located on the front of the product allows for air flow to be directed vertically and horizontally.



The ease and flexibility of use are enhanced by the presence of castor wheels which, coupled with the handles made in the device's chassis, make handling particularly easy and safe.

VORT-KRYO POLAR EVO 11 code 65001.
VORT-KRYO POLAR EVO 13 HP code 65003.

TECHNICAL FEATURES

- 2 models with different cooling capacities.
- Thermoplastic resin ABS enclosure which simultaneously ensures high mechanical resistance and a pleasing aesthetic appearance.
- Compressor which operates with ecological gas R290. To preserve the durability of the compressor, the units are equipped with a special device for instant restart immediately after each shut-down.
- Control panel positioned on the top of the product, housing the activation button for available functions, the indicator lights, display and the infrared sensor for communication with the remote control.
- IR remote control for remote activation.
- Especially complete filter system to ensure improved quality of treated air and to protect internal components. It consists of:
 - Washable dust filters set near the condensing unit air intake grilles. They protect the condensing unit heat exchanger, guaranteeing efficient operation over time.
 - Activated carbon filter serving to remove unpleasant smells from the suctioned air. Not washable and therefore must be replaced periodically when saturated.

All filters are easily accessible to guarantee easy maintenance/replacement.

- 4 operating modes: Automatic, Cooling, Dehumidifying and Ventilation.
- **TIMER** function: allows selection of ON/OFF cycle programming at intervals of 1 hour over a period of 12 hours. Setting the desired duration is very easy and intuitive thanks to the special button located on the control panel, or by using the corresponding button on the remote control.
- **SLEEP** function: optimises energy consumption at night. When set, increases (in cooling mode) and decreases (in heating mode) the initially set temperature by 1°C every 2 hours after selection (via the control panel or remote control).
- Accessories supplied: round adapter (for connection of the hot air exhaust hose to the panel that can be positioned at the window), cover for round adapter, hot air exhaust hose, panel for closing the open area at the window, equipped with round socket, for housing of the exhaust duct, pair of panels for closing the open area at the window, pipe for continuous condensation drainage, activated carbon filter.
- Class of electric isolation: I (earthing required).

IR remote control with ergonomic LCD display for remote control of:





VORT KRYO POLAR EVO RANGE

NEW

Portable air conditioners

TECHNICAL DATA

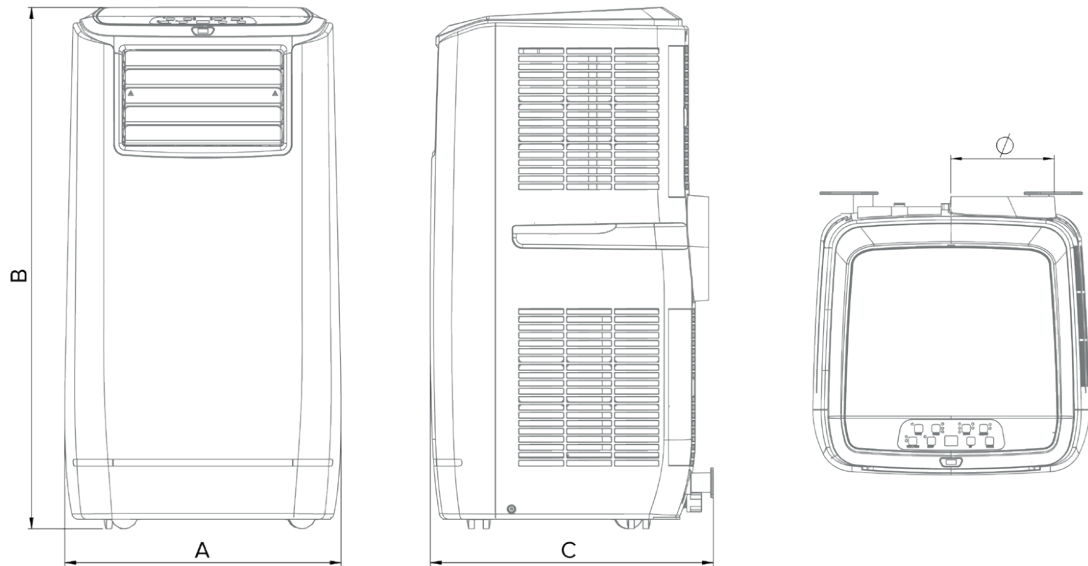
	UNIT OF MEASUREMENT	VORT-KRYO POLAR EVO 11	VORT-KRYO POLAR EVO 13 HP
CODE		65001	65003.
ELECTRICAL DATA			
Power supply	Ph / Hz / V	1 / 50 /220-240	1 / 50 /220-240
Rated absorbed power in air-air mode	W	1.05	1.38
Rated absorbed power in water-air mode	W	0.93	1.12
PERFORMANCE			
Rated cooling capacity in air-air mode	W	3.2	3.7
Rated cooling capacity in air-air mode	Btu/h	10918	12495
Rated cooling capacity in water-air mode	W	3.17	3.35
Rated cooling capacity in water-air mode	Btu/h	10822	11435
Rated energy efficiency EER in cooling in water-air mode	-	3.42	2.98
Energy efficiency class	-	A	A
Area of use	m ²	15-23	17-25
TECHNICAL INFORMATION			
Sound pressure in free field 3 m	dB(A)	42.5	43.5
Air flow rate (max spd.)	m ³ /h	495	430
Hot air exhaust hose diameter	mm	140	140
Extended length of hot air exhaust hose	m	1.5	1.5
Standard refrigerant gas charge	Kg	28	28.5
Refrigerant type	-	R290	R290
Compressor type	-	rotary	rotary
Operating temperature	°C	18 - 35	18 - 35
Ventilation speed	no.	3	3

TECHNICAL DATA PURSUANT TO REGULATION 206/2012/EU

	REFERENCE PARAMETER	UNIT OF MEASUREMENT	VORT-KRYO POLAR EVO 11	VORT-KRYO POLAR EVO 13 HP
CODE			65001	65003
RATED CAPACITY				
Cooling	Rated P	kW	3.2	3.7
RATED POWER ABSORBED				
Cooling	PEER	kW	1.05	1.38
RATED ENERGY EFFICIENCY INDEX				
Cooling	EERd	-	3.0	2.6
ELECTRIC POWER IN POWER MODE DIFFERENT FROM OPERATING				
Stand-by mode	PSB	W	250	250
Thermostat mode off	PTO	W	0.5	0.5
ANNUAL ENERGY CONSUMPTION				
Cooling	SD: QSDCE	SD: kWh/h	1.05	1.38
Sound power level	LWA	dB(A)	63	64
Global warming potential	GWP	kgCO ₂ eq	3	3

Contact for further information: Vortice Elettrosociali Spa, Strada Cerca, 2 - 20067 Zoate di Tribiano (MI) Italy

DIMENSIONS



PRODUCTS	A	B	C	KG
VORT-KRYO POLAR EVO 11	414.5	782.8	424.5	28
VORT-KRYO POLAR EVO 13 HP	414.5	782.8	424.5	28.5

Dimensions (mm)

APPLICATIONS



Vortice Elettrosociali S.p.A
Strada Cerca, 2
Frazione di Zoate
20067 Tribiano (Milan)
Tel. (+39) 02 906991
Fax (+39) 02 90699625
Italy
www.vortice.com

Vortice Limited
Beeches House-Eastern
Avenue Burton on Trent
DE13 0BB
Tel. (+44) 1283-49.29.49
Fax (+44) 1283-54.41.21
United Kingdom
www.vortice.ltd.uk

Vortice Ventilation System
(Changzhou) Co.LTD
No. 388 West Huanghe Road
Building 19, Changzhou
Post Code: 213000
China
Tel. (+86) 0519 88990150
Fax (+86) 0519 88990151
www.vortice-china.com

Vortice Latam S.A.
3er Piso, Oficina 9-B
Edificio Meridiano
Guachipelín, Escazú
San José, Costa Rica
PO Box 10-1251
Tel. (+506) 2201.6219
Fax (+506) 2201.6239
www.vortice-latam.com

